



© Fred Encuentra - Barbot Studio & © Canva

# Cancer Research at Bordeaux University Hospital's



+ [chu-bordeaux.fr](http://chu-bordeaux.fr)



# TABLE OF CONTENTS

<b>A Major Regional Player in Cancer care and research</b> .....	<b>p.3</b>
Research Performance .....	p.3
<b>Organization</b> .....	<b>p.4</b>
Department of Clinical Research and Innovation.....	p.4
Cancer Federation .....	p.5
NOVA Healthcare Cooperation Group (GCS NOVA).....	p.5
<b>Key Projects</b> .....	<b>p.6</b>
<b>Research Resources</b> .....	<b>p.7</b>
Early-Stage Clinical Research .....	p.7
<b>Hospital-University Environment</b> .....	<b>p.8</b>
<b>Cancer research strategic axes</b> .....	<b>p.9</b>
Academic research entities.....	p.9
<b>Distribution of activities</b> .....	<b>p.10</b>
<b>Support</b> .....	<b>p.11</b>
<b>Contacts</b> .....	<b>p.12</b>



## A Major Regional Player in Cancer care and research

Bordeaux University Hospital (CHU) is the leading university hospital for cancer treatment in the Nouvelle-Aquitaine region (15,000 patients per year), providing comprehensive care that brings together all medical and surgical specialties at every stage of the disease with a 18% increase in activity over the past two years.

### Research Performance

861 internal and external sponsor-initiated clinical trials are currently active in oncology at Bordeaux University Hospital, including 103 launched in 2025.

#### Internal Sponsorship

- ▶93 active projects
- ▶551 patients enrolled in 2025 at Bordeaux University Hospital

#### External Sponsorship

- ▶768 active projects
- 423 academics and 345 industrials

Ranked 2nd in the official 2025 hospital ranking published by Le Point, Bordeaux University Hospital is amongst the Top French hospitals for cancer care.

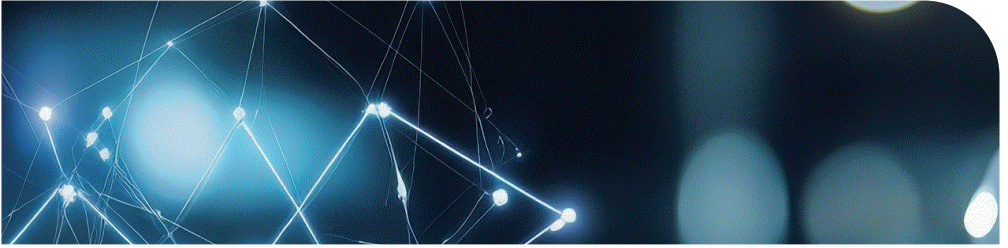
Nearly 33% of hospital stays are related to cancer care, highlighting the importance of this activity within the institution.

In 2025, 29,445 cases were reviewed in multidisciplinary tumor board meetings (MTBs) this represents 18,023 patients, involving 367 Bordeaux University Hospital clinicians and 140 external clinicians. (Source : 3C, Cancer coordinating structure)

# Organization

Bordeaux University Hospital offers integrated cancer research, supported by high-level medical, scientific, and technological resources and expertise. This organization promotes innovation, precision medicine, and the rapid translation of research advances into patient care. The hospital has research site authorizations issued by the Regional Health Agency (ARS) in several departments for the conduct of early-phase trials (first-in-human studies, including advanced therapy medicinal products ATMPs). The institution is also involved in major structuring projects at both national and European levels, particularly in the fields of precision medicine, digital health, and translational cancer research.

## Department of Clinical Research and Innovation



The Department of Clinical Research and Innovation (DRCI) coordinates and supports research at Bordeaux University Hospital. It plays a key role in developing innovative clinical trials, advancing cutting-edge translational research, and accelerating patients' access to novel treatments.

To learn more:



Latest news from the DRCI:

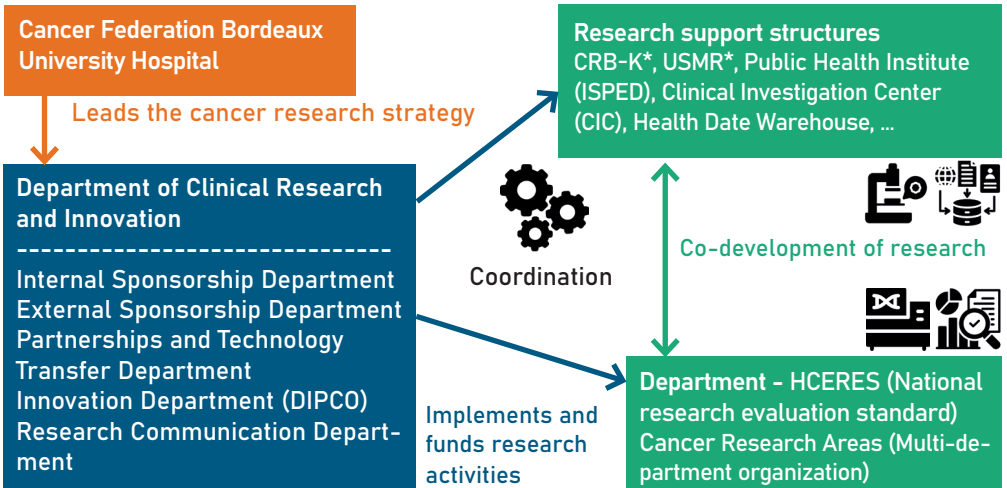


Bordeaux University Hospital DRCI is ISO 9001:2015 certified for clinical research and innovation projects strategy and support, as well as for the coordination of rare disease structures.

# Cancer Federation

To strengthen the organization and visibility of cancer care and research at Bordeaux University Hospital 's, the Cancer Federation was established in 2019. It is lead by the Federation President, the Head of the cancer division, and the Administrative Director, all of whom are integrated into the CHU's strategic steering committee. Among its missions, the Cancer Federation promotes and develops research and innovation across all medical and surgical disciplines within the hospital.

## Structuration :



GCS NOVA



Entrepôt de données de santé **nova**  
Groupement de coopération sanitaire de Nouvelle-Aquitaine

**e nova Path**  
Groupement de coopération sanitaire de Nouvelle-Aquitaine

This healthcare cooperation group (GCS), bringing together Bordeaux, Limoges, and Poitiers University Hospitals administrative bodies, enables the pooling of resources of all kinds: human, equipments, and infrastructures. NOVA provides Nouvelle-Aquitaine CHUs with the opportunity to lead collaborative projects and implement structuring initiatives at the regional level. NOVA leads the e-NovaPath project (digital pathology) and the EDS@Nova project, which aims to establish a federated regional network of hospital data warehouses (HDWs) across the Nouvelle-Aquitaine region. **In 2025, the Regional Cancer Institute (IRCA NOVA) was launched, jointly supported by Bordeaux, Limoges, and Poitiers University Hospitals.** It aims to ensure high-quality cancer care and accelerate research and innovation in the Nouvelle-Aquitaine region. This initiative is part of the European EUnetCCC project (European Network for Comprehensive Cancer Centers).

Institut régional de cancérologie **nova**  
Groupement de coopération sanitaire de Nouvelle-Aquitaine

\*Cancer Biological Resources Center (CRB-K), Methodological Support Unit for Research (USMR)

# Key Projects



- ▶ Pediatric early phase trials center (INCa-CLIP<sup>2</sup>) – CIA – Cancer Innovation Nouvelle-Aquitaine (2024–2029)



- ▶ Adult early phase trials center (INCa-CLIP<sup>2</sup>) – Hematology (2024–2029)



- ▶ RHU Digital Urology 3D – Augmented kidney cancer surgery using digital technologies and 3D printing



- ▶ Uro DM – Clinical investigation network for medical devices



- ▶ PEDIACRIEX CIRCLE, led by the GCS-IUCT, Toulouse  
A pediatric oncology research consortium funded by the French National Cancer Institute (INCa), bringing together the centers of Toulouse, Bordeaux, and Montpellier



- ▶ Partner in the RHU SPRINT project, led by Professor Adèle de Masson (University Professor–Hospital Practitioner, Université Paris Cité / AP-HP) Synergy to Accelerate Therapeutic Innovation in Cutaneous T-cell Lymphomas



# Research Resources

Bordeaux University Hospital (CHU) has a structured and high-performing environment to support cancer research, covering the entire patient care pathway and the continuum from basic research to clinical research.

Main resources include:

- ▶ Three health data warehouses: hospital HDW, UroCCR and UroCCR-Chain.
- ▶ ONCODATA Program: support for the reuse of cancer data for research purposes
- ▶ Research support structures: Methodological Support Unit for Research (USMR), Clinical Investigation Center (CIC), and Cancer Coordination Center (3C).
- ▶ Bioinformatics Support Unit for Cancer Research (CUBIC) and biostatistics support (BioStatCancer).
- ▶ Clinico-biological databases dedicated to several tumor locations (urology, hematology, dermatology, thoracic, liver, and central nervous system cancers).
- ▶ A Cancer Biological Resources Center (CRB-K) and a specialized biology platform led by the Institute of Pathology and Cancer Biology. The tumor biology platform and molecular multidisciplinary tumor boards (MTBs) serve as a reference center for the entire Nouvelle-Aquitaine region.

## Phase I clinical research

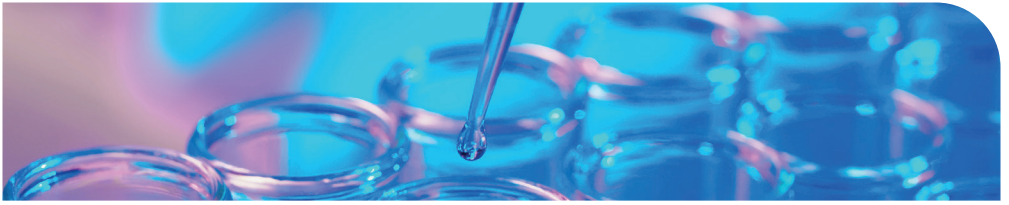
Departments authorized by the Regional Health Agency (ARS) to conduct Phase I clinical trials:

- ▶ Dermatology
- ▶ Medical oncology
- ▶ Pediatric hemato-oncology
- ▶ Adult hematology and cellular therapies
- ▶ Nuclear medicine (in progress)

Bordeaux University Hospital is labeled by the French cancer institute as a Pediatric CLIP<sup>2</sup> since 2019 (renewed in 2024). It facilitates access to early-phase clinical trials for young patients. This has enabled the implementation of Phase I trials such as the SPARTO study (NCT05210413), aimed at enhancing the effectiveness of immunotherapy in refractory or relapsed pediatric tumors.

Learn more about CLIP<sup>2</sup> CIA :





## Hospital-University Environment

Research activity within our CHU is conducted in close collaboration with major national research organizations such as the Bordeaux University, the French National Institute of Health and Medical Research (INSERM), the French National Centre for Scientific Research (CNRS)... This promotes strong translational research uniting multidisciplinary expertises, bridging laboratory discoveries and clinical applications and encourages the sharing of technological platforms.

- ▶ **85 university affiliated physicians (MD-PhDs) dedicated to cancer, representing 15% of the institution's MD-PhDs workforce. University affiliated physicians combine teaching responsibilities for undergraduate and continuing medical education, research activities, and clinical duties within the hospital.**
- ▶ **National, European, and international research network :**

### **Europe/UK**

- ▶ DKFZ
- ▶ Jewish Institute
- ▶ University College
- ▶ Cambridge University
- ▶ Southampton University

### **France**

- ▶ CIMI/APHP
- ▶ Gustave Roussy
- ▶ CIML Marseille
- ▶ CRCT Toulouse
- ▶ CLB Lyon
- ▶ Institute Bergonié

### **US labs**

- ▶ SCRIPPS research Institute
- ▶ Dana Farber
- ▶ Pittsburg medical Center
- ▶ University of southern California
- ▶ Stanford University
- ▶ Cincinnati University
- ▶ NY University
- ▶ Brigham and women's Hospital/Boston

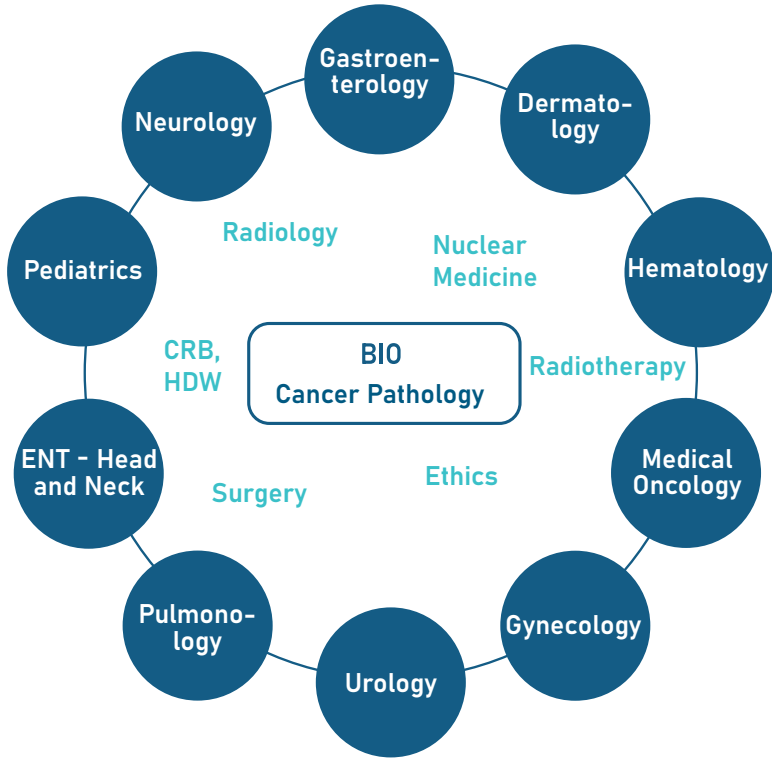
### **Canada**

- ▶ Mac Gill
- ▶ Jewish Institute
- ▶ CHUM

### **Australia**

- ▶ Melbourne, Walter and Eliza Hall
- ▶ Brisbane

# Cancer research strategic axes



## Academic research entities :

### **Epidemiology / Public Health**

Inserm U1219 – Bordeaux Population Health (BPH) / Epicene team

### **Biology**

Inserm BRIC (U1312, Bordeaux Research in Oncology / Cancer Research)

### **Mathematics / Artificial Intelligence**

INRIA – Mathematical Modeling for Oncology team (MONC)

### **Immunology**

ImmunoConcept – CNRS UMR 5164 – University of Bordeaux

### **Radiopharmacy / Nuclear Medicine**

INCIA – UMR 5287 – RACIN team: Radiochemistry and Translational Nuclear Imaging

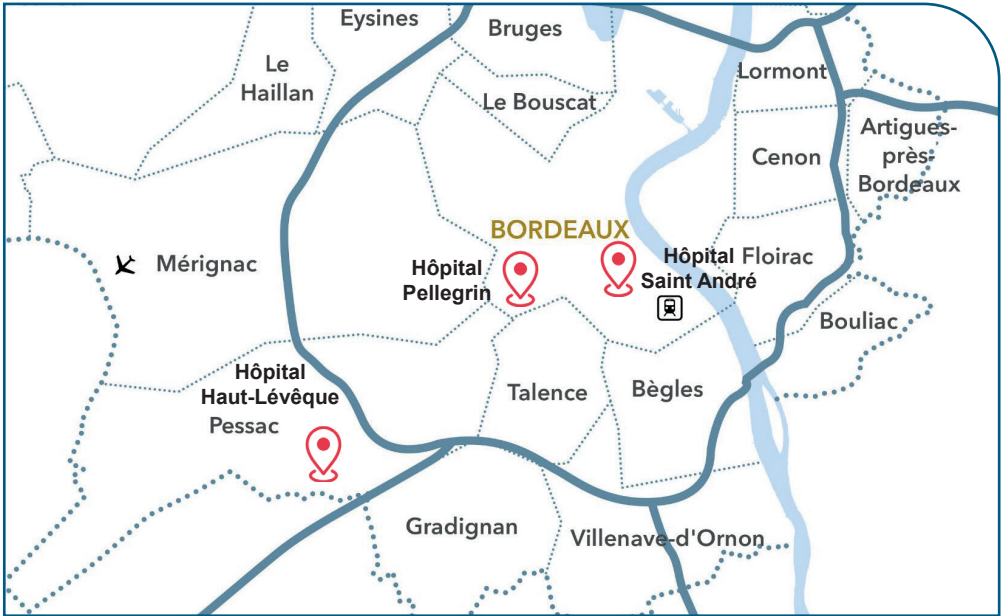
### **Metabolism / Neuro-Oncology**

IBGC UMR 5095 – Gbmetabo team – CNRS UMR 5095, IBGC

### **Chemistry / Polymers**

LCPO – UMR 5629 – Laboratory of Organic Polymer Chemistry – CNRS

# Distribution of activities



## Hospital Pellegrin

- ▶ Pathology
- ▶ Onco paediatrics
- ▶ Nuclear medicine
- ▶ Surgery (neurology  
Urlogy ENT gynaeco-  
logy)

## Hospital Haut-Lévêque

- ▶ Hematology
- ▶ Oncology (digestive,  
thoracic)
- ▶ Surgery (digestive,  
thoracic)
- ▶ Nuclear medicine
- ▶ Endocrinology
- ▶ Biological ressource  
(cancer)
- ▶ Tumour Biology
- ▶ Pathology
- ▶ Pulmonology

## Hospital Saint-André

- ▶ Medical oncology
- ▶ Onco-dermatology

# A collaborative ecosystem to accelerate clinical cancer research



# Contacts

## Cancer Federation

President of the cancer federation  
*Professeur Arnaud Pigneux*

Head of Cancer Department  
*Professeur Véronique Vendrely*

Deputy Head of the Cancer Department – Research, HCERES Cancer Axis  
*Professeur Pierre-Yves Dumas*

Cancer Federation Administrative Director  
*Floriane Lenoir*

Secretariat  
*veronique.barriere@chu-bordeaux.fr*

## Department of Clinical Research and Innovation

Clinical Research and Innovation Director  
*Carles de Bideran*

External promotion  
*recherche-externe@chu-bordeaux.fr*

Internal promotion  
*recherche-interne@chu-bordeaux.fr*

Innovation (DIPCO)  
*innovation.externe@chu-bordeaux.fr*

Translational Research Project Manager  
*christelle.liard@chu-bordeaux.fr*

## 3C, Cancer coordination center

3C Medical Representative  
*veronique.boussier@chu-bordeaux.fr*

3C Senior Health Executive  
*sylvie.marty@chu-bordeaux.fr*

## IRCA NOVA, Regional Cancer Institute

Scientific and Medical Director  
*Professeur Pierre Dubus*

Secretariat  
*valerie.theron@u-bordeaux.fr*